

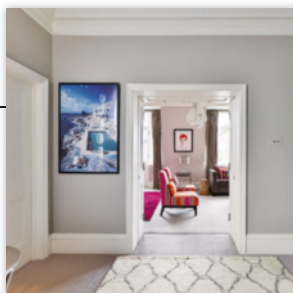


LIFE AT THE TOP

Bold colour and decorative features have completely energised Louise and Andrew Palmer's top-floor mansion block apartment

FEATURE RACHEL LEEDHAM | PHOTOGRAPHY BEN THOMPSON/WINFRIED HEINZE





HOME TRUTHS

THE PROPERTY

Mansion block apartment

LOCATION Central London**ROOMS** Sitting room, kitchen, dining room, utility room, three bedrooms (one en suite), bathroom, dressing room/study**PURCHASED** 2014**OTHER PROPERTY** 'Our principal home is situated in the Surrey Hills,' says Louise.**SITTING ROOM**

The wall of storage incorporates folding doors that can be used to separate this space from the apartment's entrance hall.

Shirley chairs, £1,080 plus 3.5m fabric, Robert Langford. Chairs in Belinda in Rose, £120m, £99m, Manuel Canovas at Colefax and Fowler



KITCHEN
Smoked glass at the end of the room and above the bar area creates a sense of depth.
Bespoke cabinetry in matt white lacquer, 202 Design



DINING ROOM

'This room was always going to be dark so I suggested we should embrace that mood rather than try to fight it,' says Sarah of this rich scheme.

Dakota dining table with Firmdale grey oak top and nickel base, £3,554, Julian Chichester. Alexa chairs, from £758 each, The Dining Chair Company. Panelling painted in Juniper Ash intelligent eggshell, £68 for 2.5ltr, Little Greene



It was the far-reaching views from this top-floor apartment that sold it to Louise and Andrew Palmer. 'It overlooks the Royal Chelsea Hospital grounds and we can see the Thames and Battersea Power Station in the distance,' says Louise. She continues: 'We also loved the fact that the main suite felt quite separate to the rest of the spaces. For a number of years, one of our daughters and her friend lived here, but we were able to keep this section for our private use whenever we were in London.'

When the couple purchased the flat in 2014, it was in need of a complete overhaul that involved replacing the dated kitchen and bathrooms and redecorating throughout. It was the couple's project

manager, Simon Davenport Associates, who put them in touch with designer Sarah Fox of Fox Interior Design. 'I love interior design and I even studied it many years ago, but I never had the confidence to pursue it, apart from giving advice to family and friends,' says Louise. 'Sarah gave me lots of advice and showed me where to source things, while really listening to my ideas.'

From the outset, Louise was keen to have colour in the schemes. 'I'm drawn to bright colours, especially orange as I find it uplifting, however, it's not always easy to find the right orange!' laughs Louise. 'We wanted the interiors to feel modern and fun, but also elegant.' The colours have been introduced with textiles, wallpapers and art, bringing punches of fuchsia pink, turquoise

blue and, of course, that elusive shade of orange, to the schemes.

Sarah helped the couple make the most of the layout of their home, suggesting widening the doorway from the spacious entrance to the sitting room, and designing a wall of storage that incorporates discreet folding doors so that the sitting room can be closed off from the entrance when required. 'The shelving provides a lovely display area and helps give the room much more character,' explains Sarah, who suggested a palette of gentle taupe and stone hues as a backdrop to the lively colours.

Bespoke decorative features play a key role, and include a beautiful tree motif in hand-painted and hand-embroidered silk for one wall of the main bedroom. This is

MAIN BEDROOM

The bespoke silk wall treatment is the focal point. Walls in Cherry Blossom in Moth on Elephant 001, hand-painted and hand-embroidered silk on paper, £472sq m, Fromental



DRESSING ROOM/STUDY

The walls and the cabinetry were painted in tonal shades. Walls in Pearl Colour 100 intelligent matt emulsion, £53 for 2.5ltr; cabinetry in Pearl Colour Dark 169 intelligent eggshell, £68 for 2.5ltr, Little Greene



complemented with a similarly organic pattern in the shower area of the adjoining bathroom, which was created using luminous mirrored mosaic set within a grout silica base. 'These elements were inspired by the trees outside the window,' says Sarah, adding, 'The rooms are not huge so we felt it was important to make each space very special.'

Indeed, the dining room, one of the smallest spaces, takes on a jewel box quality, thanks to panelling in a rich blue that is lifted with chartreuse yellow accents and a glittering pendant light. 'It's now a wonderful, intimate space to dine in,' says Louise. 'We had a great deal of fun decorating this home – I think that each room really does feel unique.' 25



GUEST BEDROOM

Cushions were chosen to tie in with the bold colours of a contemporary toile wallpaper. Folie Versailles wallpaper, £140 a roll, Cole & Son. Try Classic Stork bedside lamp in chrome, from £125, Oka

MAIN BATHROOM

Antiqued mirror cabinet doors suit the luxurious style of the space. Cabinet doors in Medium Mercury antiqued mirror, £565sq m, Dominic Schuster. Mussel Shell IP-rated wall lights, £678 each, Porta Romana